



# Rutherford County Schools

2240 Southpark Drive  
Murfreesboro, TN 37128

FEBRUARY 5, 2026  
5:30 P.M.

## AGENDA

### 1. CALL TO ORDER

### 2. PLEDGE OF ALLEGIANCE & MOMENT OF SILENCE/PRAYER

We will be opening the meeting with a brief moment of silence or prayer and the pledge of allegiance to the United States flag. No one is required to participate or be present for any of these and being in this portion of the meeting is completely voluntary.

**Work Session:** Caleb Tidwell

**Board Meeting:** Caleb Tidwell

### 3. APPROVAL OF AGENDA

**Recommended Motion - to approve the agenda as presented.**

### 4. APPROVAL OF CONSENT AGENDA (TAB 1)

#### A. Minutes:

Board Meeting Minutes, January 22, 2026

#### B. Use of Facilities:

**FACILITIES USE**

2/5/2026

Fees

|                     |   |
|---------------------|---|
| Oakland High        | OnTopAthletics, football camp, stadium, 5/9/26, \$115 per hour  |
| Riverdale High      | RCS Sports Foundation, flag football, sports field, 4/12/26 - 5/31/26, \$290 per day  |
| Riverdale High      | Super F League, soccer games, gym, 2/8/26–2/15/26, \$580  |
| Riverdale High      | USEWF, karate tournament, gym, 3/21/26, \$290   |
| Rock Springs Middle | ETC Gymnastics, competition, gym, 4/11/26 – 4/12/26, \$432  |
| Smyrna High         | MidTN Volleyball, tournaments, gym, aux. gym, 2/7/26 – 3/15/26, \$580 per day   |
| Smyrna High         | Achieving Success Martial Arts/Southeastern AAU Taekwondo District Championship, competition, gym, aux. gym & cafeteria, 3/20/26 – 3/21/26, \$916 |

**No Fees**

|                       |   |
|-----------------------|---|
| Barfield Elementary   | The Center for Martial Arts Excellence, character education, music room, 2/17/26 – 2/19/26, no fees, *In-Kind Agreement |
| Central Magnet        | Rutherford County Government, employee picnic, cafeteria & west end of campus, 9/18/26, no fees                         |
| Stewarts Creek High   | Stewarts Creek Youth Football and Cheer, practice & games, sports field, 2/6/26 – 6/1/26, no fee, *In-Kind Agreement    |
| Stewarts Creek Middle | Stewarts Creek Youth Football and Cheer, practice & games, sports field, 2/6/26 – 11/30/26, no fees, *In-Kind Agreement |

Note: Facility use prior to 2/5/26 has been granted pending Board action. A certificate of insurance with \$2,000,000.00 limits (\$1,000,000.00 if approved) is required by each user. Each group must forward any renewals of insurance to the Board on time; otherwise, approval is terminated at the end of the policy period. **All approvals are for no more than a 1-year period.**

**C. Non-Faculty Coaches:**

According to the Tennessee Secondary School Athletic Association (TSSAA) guidelines, Board of Education approval is required to allow non-faculty volunteer coaches to participate in the school athletic programs.

**The following non-faculty volunteer coaches are for the 2025-2026 school year:**

| <b>NAME</b>            | <b>SCHOOL</b>            | <b>ACTIVITY</b>  |
|------------------------|--------------------------|------------------|
| Go, Regina             | Oakland High School      | Band             |
| Moore, William Slade   | Smyrna Middle School     | Band             |
| Thornhill, Christopher | Christiana Middle School | Band             |
| Anderson, Emma         | Oakland Middle School    | Choir            |
| Russell, Riley         | Christiana Middle School | Band             |
| Rattanaovong, Benjamin | Stewarts Creek Middle    | Band             |
| Collier, Drew          | Blackman High            | Football         |
| Davis, ChaCorey        | Blackman High            | Football         |
| Steffy, Troy           | Blackman High            | Wrestling        |
| Griggs, Bobby          | Central Magnet           | Baseball         |
| Kwarteng, Abigail      | Riverdale                | Track            |
| Berger, James          | Rockvale High            | Football         |
| LaLance, Kirkland      | Siegel High              | Tennis           |
| Delaney, Shantyra      | Stewarts Creek High      | Track            |
| Jones, Carson          | Stewarts Creek High      | Ultimate Frisbee |
| Walter, Heidi          | Stewarts Creek High      | Track            |
| Lozano, Landon         | Thurman Francis          | Baseball         |
| Eidson, Trevor         | Whitworth-Buchanan       | Baseball         |

**D. Salary Supplements and Contract Payments:**

| <b>Name-Certified</b> | <b>NTE Amt.</b> | <b>School</b>          | <b>Funded By</b>                     | <b>Description</b>                                   |
|-----------------------|-----------------|------------------------|--------------------------------------|--|
| Jeffrey Willhoit      | \$1,600.00      | Blackman Middle School | School Funds - Boys Soccer           | Assistant Coach                                      |
| Laurie Smithson       | \$2,000.00      | Central Magnet         | School Funds - Safety                | Gym Supervision for 1st & 2nd Semesters              |
| Andrew Arnold         | \$2,000.00      | Central Magnet         | School Funds - Safety                | Gym Supervision for 1st & 2nd Semesters              |
| Lindsay Englade       | \$500.00        | Lavergne High School   | School Funds - Robotics              | Robotics Coach                                       |
| Michelle Burke        | \$500.00        | Oakland High School    | School Funds - Boys Basketball       | Assistant Coach                                      |
| Madison Rooker        | \$1,000.00      | Oakland High School    | School Funds - Track                 | Assistant Coach                                      |
| Kyle Lovett           | \$900.00        | Oakland High School    | School Funds - Girls/Boys Basketball | Admin. Supervision                                   |
| Brandon Nolen         | \$500.00        | Oakland High School    | School Funds - Baseball              | Assistant Coach                                      |
| Jesse Messick         | \$3,000.00      | Oakland High School    | School Funds - Baseball              | Assistant Coach                                      |
| Joe Potillor          | \$1,500.00      | Riverdale High School  | School Funds - Track                 | Gate Worker/Ticket Seller                            |
| Nicholas Wise         | \$1,500.00      | Rockvale High School   | School Funds - Boys Soccer           | Assistant Coach                                      |
| Marleen Berger        | \$700.00        | Siegel Middle School   | School Funds - Track and Field       | Assistant Coach                                      |
| Rebecca Lowry         | \$75.00         | Smyrna Middle          | School Funds - Band                  | Small group sectional instruction/CPA                |
| Phillip Kigaita       | \$100.00        | Smyrna Middle          | School Funds - Band                  | Teach music in preparation for CPA                   |
| Tyrone Jessup         | \$100.00        | Smyrna Middle          | School Funds - Band                  | CPA Camp (sectionals/master class) for Smyrna Middle |

|                         |  |                              |   |  |
|-------------------------|--|------------------------------|---|--|
| Caroline Hensley        | \$100.00                                       | Smyrna Middle                | School Funds - Band                       | Musical Sectionals/CPA   |
| Thomas Chesnut          | \$100.00                                       | Smyrna Middle                | School Funds - Band                       | CPA/Sectionals   |
| Jason Bratten           | \$800.00<br>(\$100 per game x 8 games)         | Smyrna Middle                | School Funds - Girls/Boys Basketball      | PA Announcer, Clock, scoreboard, & music                               |
| Reginald Coleman        | \$150.00                                       | Smyrna Middle                | School Funds - Band                       | Ensemble Clinician/CPA   |
| Phillip Nau             | \$500.00                                       | Stewarts Creek Middle        | School Funds - Girls/Boys Basketball      | Bookkeeper/Clock Worker  |
| Traverse Read V         | \$200.00                                       | Stewarts Creek Middle        | School Funds - Girls/Boys Basketball      | Run Clock and Bookkeeper   |
| Cortney Kentfield       | \$500.00                                       | Stewarts Creek Middle        | School Funds - Girls/Boys Basketball      | Tournament Gate Worker   |
| Jeffrey Priest          | \$500.00                                       | Stewarts Creek Middle        | School Funds - Girls/Boys Basketball      | Tournament Gate Worker   |
| Aundrea Mitchell        | \$60 per game/\$500.00                         | Thurman Francis Arts Academy | School Funds - Girls/Boys Basketball      | Monitor the weapons detection system at all TFAA home basketball games |
| <b>Name-Non-Faculty</b> | <b>NTE Amt.</b>                                | <b>School</b>                | <b>Funded By</b>                          | <b>Description</b>   |
| Allyssa Bonanno         | \$1,500.00                                     | Central Magnet               | School Funds - Middle School Girls Soccer | Assistant Coach  |
| Christopher Thornhill   | \$30-\$100 per occurrence depending on service | Christiana Middle School     | School Funds - Band                       | Low Brass Private Lessons  |
| Dean Kevin Wright       | \$5,000.00                                     | Oakland High School          | School Funds - Various Clubs and Sports   | Bus Driving and Announcing   |
| Valanna Lyons           | \$5,000.00                                     | Oakland High School          | School Funds - Softball                   | Assistant Coach  |
| Braeden Jobe            | \$500.00                                       | Oakland High School          | School Funds - Track                      | Assistant Coach  |

|                        |                           |                                   |  |                                    |
|------------------------|---------------------------|-----------------------------------|--|------------------------------------|
| Ashlyn Cook            | \$1,000.00                | Oakland High School               | School Funds - Track                               | Assistant Coach                    |
| Janai Summers          | \$500.00                  | Oakland High School               | School Funds - Track                               | Assistant Coach                    |
| Colby Howland          | \$3,000.00                | Oakland High School               | School Funds - Baseball                            | Assistant Coach                    |
| Regina Go              | \$5,000.00                | Oakland High School Band Boosters | School Funds - Band                                | Music Instruction/Lessons          |
| Emma Anderson          | \$25 per 30-minute lesson | Oakland Middle                    | School Funds - Choir                               | Private Vocal Lessons              |
| William Moore          | \$100.00                  | Smyrna Middle School              | School Funds - Band                                | Sectionals/CPA                     |
| <b>Temporary NFS</b>   | <b>NTE Amt.</b>           | <b>School</b>                     | <b>Funded By</b>                                   | <b>Description</b>                 |
| Keshena Bell           | \$1,590.00                | Whitworth Buchanan                | School Funds - Girls & Boys Basketball/Volleyball  | Score Keeper                       |
| <b>Name-Classified</b> | <b>NTE Amt.</b>           | <b>School</b>                     | <b>Funded By</b>                                   | <b>Description</b>                 |
| Everette Abbott        | \$1,000.00                | Oakland Middle School             | School Funds - Boys Soccer                         | Field Maintenance/Stripping/mowing |
| LaQuisha Swader        | \$1,500.00                | Riverdale High School             | School Funds - Track                               | Gate Worker/Ticket Seller/WDS      |
| Tracy Fox              | \$1,000.00                | Stewarts Creek Middle School      | School Funds - Girls & Boys Basketball/Tournaments | Clock/Media Board Worker           |
| LaTasha Francis        | \$1,500.00                | Stewarts Creek Middle School      | School Funds - Girls & Boys Basketball/Tournaments | Clock/Media Board Worker           |

**Recommended Motion – to approve the consent agenda as presented.**

## 5. PUBLIC COMMENTS\*

*\*Public comment requests to address the Board must be provided in writing to the Director of Schools' office no later than noon (12:00 p.m.) on the day of the meeting by completing the Public Comment Form. Speakers will have three (3) minutes to speak.*

## 6. RUTHERFORD PROUD

### **Rutherford students march in Rose Parade**

Four RCS students were selected to participate in this year's Tournament of Roses Parade, held January 1, 2026, in Pasadena, California. They will share their experience participating in the prestigious event.

#### STUDENTS:

Aiden Absher – Rockvale High School  
Gianna Castle – Oakland High School  
Teagan Chabot – Siegel High School  
Caelyb Howell – Rockvale High School

### **School counselor week**

National School Counseling Week is being observed this year from February 2–6. RCS counseling supervisor Christine Bryan will share information about the vital role of school counselors in our schools and how they contribute to the success of students.

## 7. HUMAN RESOURCES (TAB 2)

Human Resources 2026-2027 Signing Bonus Incentive

**Recommend Motion - to approve the signing bonus incentive for hard to staff subject areas as presented.**

## 8. LEGAL (TAB 3)

### I. Transfer Student Under Discipline (1)

The Board has been requested to admit a transfer student from another school system under discipline. The student was expelled for possession of drugs. According to Policy 6.318, the Board may deny admissions of any student (except those in state custody) when a student transfers from another school system while under suspension or expulsion.

Director of Schools' Recommendation: Deny admission.

**Recommended Motion - to admit or deny the admission of this Transfer Student Under Discipline as presented.**

### II. Transfer Student Under Discipline (2)

The Board has been requested to admit a transfer student from another school system under discipline. The student was expelled for possession of weapon and possession of a dangerous object.

According to Policy 6.318, the Board may deny admissions of any student (except those in state custody) when a student transfers from another school system while under suspension or expulsion.

Director of Schools' Recommendation: Deny admission.

**Recommended Motion - to admit or deny the admission of this Transfer Student Under Discipline as presented.**

## 9. INSTRUCTION

### Textbook Adoption Committee Request

#### I. Schedule E Career & Technical Education (CTE) Textbook Adoption Committee

The purpose of this committee is to review instructional materials and make recommendations for the adoption of Schedule E Career & Technical Education textbooks and resources in accordance with Rutherford County Schools procedures and state requirements.

#### **Educator Members:**

Isaac Haley – Educator  
Travis Sutton – Educator  
Jason Bowers – Educator  
Leonard Ciletti – Educator  
Amanda Jones – Educator  
Richard Beard – Educator

#### **Parent Representative:**

Mac Jones – Parent

#### **Industry Representative:**

Brian Patton – Industry Representative

Upon approval of the list above, the committee will begin the review process and move forward with the CTE textbook adoption in alignment with both state and district guidelines and timelines.

**Recommended Motion – to approve the CTE textbook adoption committee as presented.**

#### II. 2026-2027 Special Courses Request

The Instruction Department is requesting permission to make an application to offer credit for special courses under the following guidelines: Rule 0520-1-3-.05-2a: “Local school systems may offer special courses not listed in 0520-1-3-.06 on an experimental basis. The Commissioner of Education must approve each course in advance each year.” Rutherford County High Schools are requesting approval for the following special course requests:

#### **New courses:**

- Advanced Grammar
- Fine Arts Appreciation
- Survey of Advanced Math Topics

**Courses for Renewal:**

- Intro to Linguistics - Y01HB2
- Infectious Diseases - Y03H32
- Intro to Microbiology - Y03H31
- Neuroscience & Society - Y04H88
- Sports Psychology - Y04HA9

**Recommended Motion – to approve the special courses request as presented.**

**10. FINANCIAL MATTERS (TAB 4)**

Wilson Bank, Riverdale High School and Riverdale Baseball Booster Club Agreement

Riverdale High and Riverdale Baseball Booster Club in partnership with Wilson Bank to provide and maintain a video scoreboard and signage.

**Recommended Motion – to approve the agreement between Wilson Bank, Riverdale High and Riverdale Baseball Booster Club as presented.**

**11. ENGINEERING AND CONSTRUCTION (TAB 5)**

I. Eagleville baseball fence request: Principal Tim Pedigo is requesting to utilize baseball account funds to replace the fence at the baseball field. This project is requested and not to exceed \$18,000.00 and is at no cost to the Board. Engineering and Construction has reviewed the request and has no objections.

**Recommended Motion - to approve the Eagleville baseball fence request as presented.**

II. Smyrna High ROTC obstacle course request: Dr. Sherri Southerland is requesting to install a ROTC obstacle course to be funded by CTE. The project will be funded through CTE funds and is not expected to exceed \$4,000.00. Engineering and Construction has reviewed the request and has no objection.

**Recommended Motion - to approve the Smyrna High ROTC obstacle course request as presented.**

III. Whitworth Buchanan scoreboard relocation request: Principal Chris Butner is requesting to be allowed to receive the existing baseball scoreboard from Siegel High School to replace the one currently on campus. Anticipated cost to replace the existing support structure. The project will be funded through baseball funds and is not expected to exceed \$3,000.00. Engineering and Construction has reviewed the request and has no objection.

**Recommended Motion - to approve the Whitworth Buchanan baseball scoreboard request as presented.**

IV. Smyrna Primary School soccer goal request: Dr. Amy Perry has requested to purchase permanent soccer goals for Smyrna Primary utilizing fundraiser funds. The cost for this request is \$6,757.08. Engineering and Construction has reviewed the request and has no objection.

**Recommended Motion – to approve the soccer goal request for Smyrna Primary School as presented.**

## **12. FINANCIAL UPDATES**

## **13. DIRECTOR’S UPDATE**

## **14. GENERAL DISCUSSION**

## **15. ADJOURNMENT**



# Rutherford County Schools

2240 Southpark Drive  
Murfreesboro, TN 37128

## MINUTES OF JANUARY 22, 2026

### **Board Members Present**

Claire Maxwell, Board Chair  
Frances Rosales, Vice-Chair  
Katie Darby  
Tammy Sharp  
Caleb Tidwell  
Butch Vaughn  
Stan Vaught

**Other: Dr. James Sullivan, Director of Schools**

### **1. CALL TO ORDER 5:30 pm**

### **2. PLEDGE OF ALLEGIANCE & MOMENT OF SILENCE/PRAYER**

We will be opening the meeting with a brief moment of silence or prayer and the pledge of allegiance to the United States flag. No one is required to participate or be present for any of these and being in this portion of the meeting is completely voluntary.

**Work Session:** Claire Maxwell, special prayer request for Tim Holden, former Board member as he battles kidney failure and Mike Walls, Maintenance Director, who is recovering from surgery.

**Board Meeting:** Claire Maxwell

### **3. APPROVAL OF AGENDA**

**Motion made by Butch Vaughn and seconded by Caleb Tidwell to approve the agenda as presented.**

**Vote: All yes**

**Motion passes.**

**4. RENEWAL – EXTENSION OF DIRECTOR’S CONTRACT (TAB 1)**

**Continued discussion from Tuesday’s Work Session concerning the Director’s contract and making changes to the severance payout and limiting it to six months if the Director is terminated without cause. Other discussion listed all the accomplishments of Rutherford County Schools under the current leadership and the desire to leave the contract alone. Call to question to end discussion.**

**Roll Call Vote:**

**Katie Darby-Y**

**Stan Vaught-Y**

**Frances Rosales-Y**

**Butch Vaughn-Y**

**Caleb Tidwell-N**

**Tammy Sharp-Y**

**Claire Maxwell-Y**

**Vote: 6 Yes; 1 No**

**Motion passes.**

**Amendment to the Motion made by Caleb Tidwell and seconded by Tammy Sharp to modify the severance payout to six months without just cause in the event the Director is terminated.**

**Roll Call Vote:**

**Caleb Tidwell-Y**

**Frances Rosales-N**

**Tammy Sharp-Y**

**Stan Vaught-N**

**Butch Vaughn-N**

**Katie Darby-Y**

**Claire Maxwell-N**

**Vote: 3 Yes; 4 No**

**Motion fails.**

**Amendment to the motion was rejected by Butch Vaughn to add to the original motion.**

**Mr. Reed, summarized the current contract to say if a Director is terminated for cause, then there is no balance or payout due. If the Director is terminated without cause, then severance must be paid. Mr. Reed explained that the existing contract is in place and enforceable unless there is an amendment that both parties sign off and agree to.**

**Motion made by Butch Vaughn and seconded by Frances Rosales to approve the Director’s contract extension as presented.**

**Roll Call Vote:**

**Stan Vaught-Y**

**Butch Vaughn-Y**  
**Katie Darby-N**  
**Tammy Sharp-N**  
**Caleb Tidwell-N**  
**Frances Rosales-Y**  
**Claire Maxwell-Y**

**Vote: 4 Yes; 3 No**  
**Motion passes.**

**5. APPROVAL OF CONSENT AGENDA (TAB 2)**

**Dr. Sullivan disclosed that he is coaching basketball under the TN Ignite Program and will be at Christiana Middles School. He does not handle money for this organization, and TN Ignite is paying Use of Facilities fee.**

- A. Minutes:** Board Meeting Minutes, January 8, 2026
- B. Bids:** Request to Purchase Homesteader enclosed trailer (OHS Culinary)  
Request to Purchase a mower (RSM)  
Request to Purchase Omnia Contract R250307 (renewal of Security Software Monitoring)
- C. Use of Facilities**

**FACILITIES USE**

1/22/2026

**Fees**

|                     |  |
|---------------------|--|
| Barfield Elementary | RockOnMusic dba FineArtsMatter, guitar & music class, classrooms, 2/2/26 – 5/4/26, \$30 per day          |
| Blackman Middle     | Tennessee Hustle Basketball, practice, gym, 2/1/26 – 6/30/26, \$18 per hour                              |
| Christiana Middle   | TN Ignite, basketball practice, gym, 2/4/26 – 7/31/26, \$18 per hour                                     |
| Eagleville          | Murfreesboro Obedience Training Club, scent work trial, classrooms, cafeteria & campus, 5/30/26, \$1,918 |
| Riverdale High      | Ridgeside Subdivision HOA, meeting, cafeteria, 2/18/26, \$18 per hour                                    |

|                     |  |
|---------------------|--|
| Rockvale Elementary | TN Ignite, basketball practice, gym, 2/4/26 – 7/31/26, \$18 per hour                   |
| Siegel Middle       | Jack City 2014, softball practice, sports field, 1/23/26 – 2/12/26, \$18 per hour      |
| Smyrna High         | North Rutherford Soccer/Stones River FC, games, stadium, 1/24/26, \$100 per hour       |
| Wilson Elementary   | RockOnMusic dba FineArtsMatter, music class, classrooms, 2/4/26 – 5/1/26, \$30 per day |

**No Fees**

|                        |  |
|------------------------|--|
| Roy Waldron Elementary | Universal Sports League, basketball games, gym, 1/24/26 – 3/14/26, no fees |
|------------------------|--|

Note: Facility use prior to 1/22/26 has been granted pending Board action. A certificate of insurance with \$2,000,000.00 limits (\$1,000,000.00 if approved) is required by each user. Each group must forward any renewals of insurance to the Board on time; otherwise, approval is terminated at the end of the policy period. **All approvals are for no more than a 1-year period.**

**D. Non-Faculty Coaches:**

According to the Tennessee Secondary School Athletic Association (TSSAA) guidelines, Board of Education approval is required to allow non-faculty volunteer coaches to participate in the school athletic programs.

**The following non-faculty volunteer coaches are for the 2025-2026 school year:**

| NAME                    | SCHOOL            | SPORT         |
|-------------------------|-------------------|---------------|
| Summers, Janai          | Oakland High      | Track         |
| Galinat, Jacob          | Oakland Middle    | Baseball      |
| Murphy, Jamie           | Rocky Fork Middle | Track         |
| West, Adam              | Rocky Fork Middle | Baseball      |
| DeGuzman, Johanna-Grace | Smyrna High       | Flag Football |
| Powell, Randarius       | Smyrna High       | Tennis        |
| Pruitt, David           | Smyrna High       | Tennis        |
| Clemons, Anthony        | Smyrna Middle     | Baseball      |

|                 |                       |             |
|-----------------|-----------------------|-------------|
| Miller, Terry   | Smyrna Middle         | Softball    |
| Scott, Jeremiah | Smyrna Middle         | Baseball    |
| Dohuky, Omar    | Stewarts Creek Middle | Boys Soccer |

**E. Salary Supplements and Contract Payments:**

| <b>Name-Certified</b>   | <b>NTE Amt.</b>          | <b>School</b>        | <b>Funded By</b>                  | <b>Description</b>   |
|-------------------------|--------------------------|----------------------|-----------------------------------|--|
| Isaiah Phillips         | \$500.00                 | Blackman High School | School Funds - Basketball         | Supervision of workout room over winter break                      |
| Nolan Clark Blair       | \$2,000.00               | McFadden             | School Funds - Jr Pro             | Gym Supervision, Setup, & Cleanup                                  |
| Rachel Deml             | \$8,000.00               | Siegel High School   | Outside Group / Use of Facilities | Building Supervisor - Fellowship Bible church of Rutherford County |
| <b>Name-Non-Faculty</b> | <b>NTE Amt.</b>          | <b>School</b>        | <b>Funded By</b>                  | <b>Description</b>   |
| Brianne Allen           | \$1,500.00               | Siegel Middle School | School Funds - Softball           | Asst. Softball Coach   |
| Sean Minnery            | \$400.00                 | Whitworth Buchanan   | School Funds - Archery            | Asst. Archery Coach  |
| <b>Name-Classified</b>  | <b>NTE Amt.</b>          | <b>School</b>        | <b>Funded By</b>                  | <b>Description</b>   |
| Amanda Ladd             | Classified Overtime Rate | Rock Springs Middle  | School Funds - Archery            | Custodial  |

**Motion made by Stan Vaught and seconded by Butch Vaughn to approve the consent agenda as presented.**

**Vote: All yes**

**Motion passes**

**6. GUEST SPEAKER**

**Work Session:** Presentation to the Board by Mr. Edsel Charles of MarketGraphics Research Group, Inc.

**Board Meeting:** Presentation to the Board by the Colonel Hardy Murfree Chapter of the Daughters of the American Revolution

**7. PUBLIC COMMENTS\***

**No public comments.**

*\*Public comment requests to address the Board must be provided in writing to the Director of Schools' office no later than noon (12:00 p.m.) on the day of the meeting by completing the Public Comment Form. Speakers will have three (3) minutes to speak.*

**8. RUTHERFORD PROUD**

**Rutherford students, teacher march in Rose Parade**

Four RCS students and one teacher were selected to participate in this year's Tournament of Roses Parade, held January 1, 2026, in Pasadena, California. He will share his experience participating in this prestigious event.

*TEACHER*

Jared Ford – Band Director, Siegel Middle School

**Dr. Anna Ralston receives state award for Special Education**

Dr. Annie Ralston, Special Education Coordinator for Rutherford County Schools, in December received the Tennessee Association of Administrators in Special Education (TAASE) Cup, one of the state's most prestigious honors recognizing excellence in special-education leadership.

**Meagan Turnbow honored as state finalist for Tennessee Supervisor of the Year**

The Tennessee Department of Education held an awards reception for state finalists in December at the Noah Liff Opera Center. Ms. Turnbow was honored as the Mid Cumberland Core Regional Supervisor of the Year for 2025-2026

**RCS Supervisor of the Year, Principal of the Year**

Dr. Mark Gullion, Federal Programs director, has been named RCS Supervisor of the Year, and Buchanan Elementary Principal Ashley Witt has been named the RCS Principal of the Year. Both will now advance to the regional competition.

**9. BOARD ITEMS (TAB 3)**

**Dr. Sullivan stated that this is already part of the current curriculum but would also be added to Constitution Week each September.**

A Resolution to Establish an Annual Observance of the Fourth of July Through Instruction in All Schools

The Fourth of July commemorates the founding of the United States of America and the adoption of the Declaration of Independence. Because this national holiday occurs during the summer months when schools are not in session, the Board affirms the importance of intentional instruction during the academic year to ensure students understand the historical significance, constitutional foundations, and civic principles upon which the nation was established.

**Motion made by Frances Rosales and seconded by Butch Vaughn to approve the resolution in support of Fourth of July instruction in all schools as presented.**

**Vote: All yes**

**Motion passes.**

**10. HUMAN RESOURCES**

2025-2026 Tenure Recommendations: The following teacher(s) meet the criteria for tenure in accordance with the tenure law:

- Holds a valid Tennessee teaching license.
- Has served Rutherford County Schools for five years (45-months minimum) within a seven-year period, the last two in a regular (not interim) position.
- Has demonstrated an overall performance of “above expectations” or “significantly above expectations” on the TEAM evaluation during the last two consecutive years of the five-year period.
- **Or** if held tenure under the previous guidelines, and returned to Rutherford County Schools, meets the two-year probationary period and tenure is reactivated.

**Elementary Schools:**

|    | <b>Name</b>                  | <b>Position</b>                 | <b>School/Location</b>    |
|----|------------------------------|---------------------------------|---------------------------|
| 1  | Susan M. Dipentino           | Special Ed. Teacher             | Barfield Elementary       |
| 2  | Demia D. Espinal             | School Counselor                | Barfield Elementary       |
| 3  | William Kevin Templeton      | Assistant Principal             | Barfield Elementary       |
| 4  | Kimberly Davis King          | 4th Grade Teacher               | Buchanan Elementary       |
| 5  | Jennifer Dawn Russell        | Music Teacher                   | Buchanan Elementary       |
| 6  | Joyce Elizabeth Stucky*      | Kindergarten Teacher            | Buchanan Elementary       |
| 7  | Goeun Byon                   | Special Ed. Teacher             | Blackman Elementary       |
| 8  | Angela Dea Ruzicka           | School Counselor                | Blackman Elementary       |
| 9  | Midge Chipman Taylor*        | 1st Grade Teacher               | Blackman Elementary       |
| 10 | Margaret Rose Elaine Tillman | 4th Grade Teacher               | Blackman Elementary       |
| 11 | Kyndall Marielle Alexander   | 4th Grade Teacher               | Brown’s Chapel Elementary |
| 12 | Alyssa Leigh Arrington       | 2nd Grade Teacher               | Brown’s Chapel Elementary |
| 13 | Corrine Marie Morris         | SpED Structured Setting Teacher | Brown’s Chapel Elementary |
| 14 | Michaela Lynn Schuzer        | Kindergarten Teacher            | Brown’s Chapel Elementary |
| 15 | Anna M’Kenzie Stratton       | 1st Grade Teacher               | Brown’s Chapel Elementary |
| 16 | Abigail P. Stokes            | 3rd Grade Teacher               | Brown’s Chapel Elementary |

|    |                               |                          |                               |
|----|-------------------------------|--------------------------|-------------------------------|
| 17 | Monica Nicole Addison Roberts | Library Media Specialist | Cedar Grove Elementary        |
| 18 | Emily Caroline Bessant        | 5th Grade Teacher        | Cedar Grove Elementary        |
| 19 | Jessica Lynn Galloway         | School Counselor         | Cedar Grove Elementary        |
| 20 | Brittany Megan Pires          | Kindergarten Teacher     | Cedar Grove Elementary        |
| 21 | Kara Windrow DeLozier         | 1st Grade Teacher        | Christiana Elementary         |
| 22 | Brock Mackenzie Elliott       | Special Ed. Teacher      | Christiana Elementary         |
| 23 | Sharon Kaye Hawk              | 1st Grade Teacher        | Christiana Elementary         |
| 24 | Jamie L. Hines                | 3rd Grade Teacher        | Christiana Elementary         |
| 25 | Lydia Laine Mehring           | 1st Grade Teacher        | Christiana Elementary         |
| 26 | James N. Steiner              | 5th Grade Teacher        | Christiana Elementary         |
| 27 | Simone Breanne LeClaire       | 1st Grade Teacher        | David Youree Elementary       |
| 28 | Caitlin Elizabeth Miller      | 4th Grade Teacher        | David Youree Elementary       |
| 29 | Christy Stewart Simmons       | 2nd Grade Teacher        | David Youree Elementary       |
| 30 | Leighann Marie Smith          | 1st Grade Teacher        | David Youree Elementary       |
| 31 | Christa D. Campbell*          | Instructional Coach      | HP Campus/McFadden            |
| 32 | Sayward Amanda Ratliff        | Art Teacher              | HP Campus School              |
| 33 | Bethany Katlynn Qualls        | School Counselor         | John Colemon Elementary       |
| 34 | Chance Nicholas Simms         | PE Teacher               | John Colemon Elementary       |
| 35 | Maria Sturgill Webb           | Kindergarten Teacher     | John Colemon Elementary       |
| 36 | Natalie Danielle Cates        | 2nd Grade Teacher        | Kittrell Elementary           |
| 37 | Marisela Rosado               | 1st Grade Teacher        | Lascassas Elementary          |
| 38 | Aliya Allegria Castle         | 3rd Grade Teacher        | La Vergne Lake Elementary     |
| 39 | Frances Obrien O’Riordan      | 5th Grade Teacher        | La Vergne Lake Elementary     |
| 40 | Jenny P. Copeland*            | Kindergarten Teacher     | McFadden School of Excellence |
| 41 | Megan M. Frazier              | Library Media Specialist | McFadden School of Excellence |
| 42 | Madison Quinn Byrne           | 4th Grade Teacher        | Plainview Elementary          |

|    |                            |                          |                           |
|----|----------------------------|--------------------------|---------------------------|
| 43 | Jordan Michelle Cothron    | Kindergarten Teacher     | Plainview Elementary      |
| 44 | Shelby Lynn Livingston     | 4th Grade Teacher        | Plainview Elementary      |
| 45 | Norman Lowell Smith        | 4th Grade Teacher        | Plainview Elementary      |
| 46 | Jessica Lynn Zierman       | 1st Grade Teacher        | Plainview Elementary      |
| 47 | Lawren Nicole Christianson | Pre-K Teacher            | Poplar Hill Elementary    |
| 48 | Courtney Mullins           | 4th Grade Teacher        | Poplar Hill Elementary    |
| 49 | Sara L. Wilcox             | 2nd Grade Teacher        | Poplar Hill Elementary    |
| 50 | Mona Zaki Abualnail        | 1st Grade Teacher        | Rockvale Elementary       |
| 51 | Kimberly Michelle Bove     | 1st Grade Teacher        | Rockvale Elementary       |
| 52 | Kristen Denise Looney*     | 4th Grade Teacher        | Rockvale Elementary       |
| 53 | Jill Leighton Massengill   | 2nd Grade Teacher        | Rockvale Elementary       |
| 54 | Casandra Nell McDougal     | Kindergarten Teacher     | Rockvale Elementary       |
| 55 | Karen Lynn Mobbs*          | 3rd Grade Teacher        | Rocky Fork Elementary     |
| 56 | Bradley Scott Platt        | 2nd Grade Teacher        | Rocky Fork Elementary     |
| 57 | Molly Elizabeth Sanchez    | ESL Teacher              | Rock Springs Elementary   |
| 58 | James Keith Bessant        | 4th Grade Teacher        | Roy Waldron Elementary    |
| 59 | Chelsea Lynn Bruster       | 1st Grade Teacher        | Roy Waldron Elementary    |
| 60 | Kasi Danae Crawley         | 1st Grade Teacher        | Roy Waldron Elementary    |
| 61 | Jill Marie Harder          | 1st Grade Teacher        | Roy Waldron Elementary    |
| 62 | Virginia Lane Sheetz       | Music Teacher            | Roy Waldron Elementary    |
| 63 | Jaelyn Nicole Vander Woude | 2nd Grade Teacher        | Roy Waldron Elementary    |
| 64 | Ivy Summer Miller          | 4th Grade Teacher        | Smyrna Elementary         |
| 65 | Amy Lucinda Gardner        | Special Ed. Teacher      | Smyrna Primary            |
| 66 | Angela D. Helton*          | Kindergarten Teacher     | Smyrna Primary            |
| 67 | Rachel Dyan Nitzsche       | 2nd Grade Teacher        | Smyrna Primary            |
| 68 | Elizabeth Marie Brown*     | 5th Grade Teacher        | Stewarts Creek Elementary |
| 69 | Sarah Elizabeth Delacruz   | 1st Grade Teacher        | Stewartsboro Elementary   |
| 70 | Shelby Grace Gentry        | 1st Grade Teacher        | Stewartsboro Elementary   |
| 71 | Rachael Marie Peterson     | 5th Grade Teacher        | Stewartsboro Elementary   |
| 72 | McKinsie Elise Rutherford  | Academic Interventionist | Stewartsboro Elementary   |

|    |                        |                          |                              |
|----|------------------------|--------------------------|------------------------------|
| 73 | Amanda Rose Vanderpool | Academic Interventionist | Stewartsboro Elementary      |
| 74 | Emily Jaima Marghella  | 5th Grade Teacher        | Thurman Francis Arts Academy |
| 75 | Lindy Casandra Bolyard | 1st Grade Teacher        | Walter Hill Elementary       |
| 76 | Krista Jean Butler     | Instructional Coach      | Walter Hill Elementary       |
| 77 | Mary Katherine Monson  | 3rd Grade Teacher        | Walter Hill Elementary       |
| 78 | Myranda Lyn Peterson   | 5th Grade Teacher        | Walter Hill Elementary       |
| 79 | Abigail Turner         | 1st Grade Teacher        | Walter Hill Elementary       |
| 80 | Ashley J. Cathers*     | 4th Grade Teacher        | Wilson Elementary            |
| 81 | Lauren Alexis Leboy    | 2nd Grade Teacher        | Wilson Elementary            |
| 82 | Hallie Jewell Madewell | 3rd Grade Teacher        | Wilson Elementary            |
| 83 | Anita Fay Renwhaw      | ESL Teacher              | Wilson Elementary            |
| 84 | Lydia Renate Smith     | 5th Grade Teacher        | Wilson Elementary            |

**Claire Maxwell disclosed that her daughter-in-law, Sydney Maxwell, is on the middle school tenure list.**

**Middle Schools:**

|    | Name                      | Position                         | School/Location          |
|----|---------------------------|----------------------------------|--------------------------|
| 85 | Benjamin Luke Hillis      | CTE - Career Exploratory         | Blackman Middle School   |
| 86 | Ellen Renee Johnson       | 6th/8th Grade Social Studies     | Blackman Middle School   |
| 87 | Megan Elizabeth Kelley    | PE Teacher                       | Blackman Middle School   |
| 88 | Kerri Lee Lovell          | 6th Grade Math Teacher           | Blackman Middle School   |
| 89 | Cynthia Kurzrock Lozier   | 8th Grade ELA Teacher            | Blackman Middle School   |
| 90 | Joshua Pope               | 7th Grade ELA Teacher            | Blackman Middle School   |
| 91 | Lynne Claire Rankin       | 6th Grade Math Teacher           | Blackman Middle School   |
| 92 | Sara Nicole Wright        | Math Teacher                     | Blackman Middle School   |
| 93 | Mehgan Denise Quinn       | 6th Grade Social Studies Teacher | Christiana Middle School |
| 94 | Sarah Jennifer Schwartz   | 8th Grade Math Teacher           | Christiana Middle School |
| 95 | Allana R Dail             | 7th Grade ELA Teacher            | La Vergne Middle School  |
| 96 | Manal Girgis              | ESL Teacher                      | La Vergne Middle School  |
| 97 | Michael Anthony Happel    | 6th Grade Math Teacher           | La Vergne Middle School  |
| 98 | Jennifer Paige Johannesen | ESL Teacher                      | La Vergne Middle School  |

|     |                           |                                  |                                  |
|-----|---------------------------|----------------------------------|----------------------------------|
| 99  | Jessica Leigh Mansfield   | 7th Grade Math Teacher           | La Vergne Middle School          |
| 100 | Evelyn Tabilisma Egan     | 7th Grade Math Teacher           | Oakland Middle School            |
| 101 | Ashley Michelle Moore     | 8th Grade Math Teacher           | Oakland Middle School            |
| 102 | Chandra Denise Bennett    | ELA/Gifted Teacher               | Rockvale Middle School           |
| 103 | Jessica Dawn Bennett      | 8th Grade ELA Teacher            | Rockvale Middle School           |
| 104 | Leighton Charles Butler   | Assistant Principal              | Rockvale Middle School           |
| 105 | Brittney L Shea           | 8th Grade ELA Teacher            | Rockvale Middle School           |
| 106 | Marian C Fleener          | SpED Structured Setting Teacher  | Rocky Fork Middle School         |
| 107 | Katie Nicole Jones        | 6th Grade ELA Teacher            | Rocky Fork Middle School         |
| 108 | Sydney Nicole Maxwell     | ESL Teacher                      | Rocky Fork Middle School         |
| 109 | Jennifer Leigh Grimes     | Science/Social Studies Teacher   | Rock Springs Middle School       |
| 110 | Stephanie Louise Sloan    | SpED Teacher                     | Rock Springs Middle School       |
| 111 | Shawn Todd                | English Teacher                  | Rock Springs Middle School       |
| 112 | Tearsa Gardner            | SpED Teacher                     | Siegel Middle School             |
| 113 | Vanessa Cynthia Nelson    | 8th Grade ELA Teacher            | Siegel Middle School             |
| 114 | Bridgette Michelle Adkins | Fine Arts Teacher                | Smyrna Middle School             |
| 115 | Amber Marie Morton*       | 8th Grade Science Teacher        | Smyrna Middle School             |
| 116 | Amanda Kayleigh Phillips  | 7th and 8th Grade Math Teacher   | Smyrna Middle School             |
| 117 | Sharla Lee Dozier*        | Math Teacher                     | Stewarts Creek Middle School     |
| 118 | Kara Katherine Flippo     | 6th Grade Science                | Stewarts Creek Middle School     |
| 119 | Megan Louise Jones        | SpED CDC Teacher                 | Stewarts Creek Middle School     |
| 120 | Brittany Nicole Waltman   | 8th Grade ELA Teacher            | Stewarts Creek Middle School     |
| 121 | Vincent Takeshi Nagatomo  | 6th Grade Social Studies Teacher | Whitworth-Buchanan Middle School |

**High Schools:**

|     | Name                | Position               | School/Location      |
|-----|---------------------|------------------------|----------------------|
| 122 | James David Cassidy | CTE - Criminal Justice | Blackman High School |

|     |                                  |                                    |                          |
|-----|----------------------------------|------------------------------------|--------------------------|
| 123 | Angela Renee Hames               | English Teacher                    | Blackman High School     |
| 124 | Alexander Anthony Mullane        | English Teacher                    | Blackman High School     |
| 125 | DeAnna DeBow Osborne*            | ESL Teacher                        | Blackman High School     |
| 126 | Brittany Lea Wiloughby Dixon     | Spanish Teacher                    | Central Magnet School    |
| 127 | Brandon Martin Eldridge          | History Teacher                    | Central Magnet School    |
| 128 | Eric Clayton Fann*               | Biology Teacher                    | Central Magnet School    |
| 129 | Danny Leon Freeman               | Art Teacher                        | Central Magnet School    |
| 130 | Marisa Keiann Miller             | Social Studies Teacher             | Central Magnet School    |
| 131 | Dusty Chade Stearns              | PE Teacher                         | Central Magnet School    |
| 132 | Steven K. Nixon*                 | History Teacher                    | Daniel McKee Alternative |
| 133 | Kimberly Joan Norrod             | English Teacher                    | Daniel McKee Alternative |
| 134 | Glenn Thomas Suggs*              | Assistant Principal                | Daniel McKee Alternative |
| 135 | Rachel Lindsay Acevedo           | Spanish Teacher                    | Eagleville School        |
| 136 | Steven Anthony Ford              | Government/Economics<br>Teacher    | Holloway High School     |
| 137 | Cynthia Blair Barnhill           | 9th Grade World History<br>Teacher | La Vergne High School    |
| 138 | Ryan Thomas Flynn*               | Integrated Math I Teacher          | La Vergne High School    |
| 139 | Miryam Elisheba Hayes            | English Teacher                    | La Vergne High School    |
| 140 | Joseph Andrew Huddleston         | PE/Personal Finance Teacher        | La Vergne High School    |
| 141 | Charlise Kinslow                 | Cosmetology Teacher                | La Vergne High School    |
| 142 | Ryan Hunter Locke                | Criminal Justice Teacher           | La Vergne High School    |
| 143 | Julie Adolfinia Lopez-Aguirre    | Spanish Teacher                    | La Vergne High School    |
| 144 | Nicholas David Narrell           | Math Teacher                       | La Vergne High School    |
| 145 | Autumn Simpson                   | English Teacher                    | La Vergne High School    |
| 146 | Marcus S Bryson                  | PE Teacher                         | Oakland High School      |
| 147 | Alexandra Vania Chatman          | English Teacher                    | Oakland High School      |
| 148 | Ciera Dobbins Jackson            | Math Teacher                       | Oakland High School      |
| 149 | Anthony Rutland                  | Criminal Justice Teacher           | Oakland High School      |
| 150 | Abdul Samad Tamim Abu-<br>Shanab | Science Teacher                    | Riverdale High School    |
| 151 | Melissa M Bunch                  | Chemistry Teacher                  | Riverdale High School    |

|     |                           |                                |                       |
|-----|---------------------------|--------------------------------|-----------------------|
| 152 | Trent Carrier             | Chemistry Teacher              | Riverdale High School |
| 153 | Byrena Lynn Floyd-Kirkham | SpED Teacher                   | Riverdale High School |
| 154 | Tracie Marie Cannon Holt  | Instructional Coach            | Riverdale High School |
| 155 | Haley Michelle Lambert    | History Teacher                | Riverdale High School |
| 156 | Barry Scott Marton        | History Teacher                | Riverdale High School |
| 157 | Ashley Marie Polk         | 9th and 10th Grade ELA Teacher | Riverdale High School |
| 158 | Brittany Erin Rhinehart   | Biology Teacher                | Riverdale High School |
| 159 | Nicole Marie Rodrigues    | English Teacher                | Riverdale High School |
| 160 | Hannah Joy Belcher        | Math Teacher                   | Rockvale High School  |
| 161 | Julie Anne Benjamin       | English Teacher                | Rockvale High School  |
| 162 | Heather Aliene Bethurum   | Art Teacher                    | Rockvale High School  |
| 163 | Patricia Campbell         | Spanish Teacher                | Rockvale High School  |
| 164 | Dakota Chance Crane       | PE Teacher                     | Rockvale High School  |
| 165 | Ryan Walker Feris         | Wellness Teacher               | Rockvale High School  |
| 166 | Salah H Ghatas            | Math Teacher                   | Rockvale High School  |
| 167 | Joshua Mathew Loomis      | Math Teacher                   | Rockvale High School  |
| 168 | Jasmine Smith             | SpED Teacher                   | Rockvale High School  |
| 169 | Carissa Lynn VerBruggen   | English Teacher                | Rockvale High School  |
| 170 | Jonathan Leon White       | History Teacher                | Rockvale High School  |
| 171 | Layne Allen               | SpED Teacher                   | Siegel High School    |
| 172 | Joshua B Carroll          | STEM Teacher                   | Siegel High School    |
| 173 | John Michael Cooper       | Spanish Teacher                | Siegel High School    |
| 174 | Melissa Lynn Deer         | English Teacher                | Siegel High School    |
| 175 | John C DeValk             | Science Teacher                | Siegel High School    |
| 176 | Randall Lee Murphree      | PE Teacher                     | Siegel High School    |
| 177 | Misty James Naran         | Math Teacher                   | Siegel High School    |
| 178 | Sapnesh Pravin Naran      | Math Teacher                   | Siegel High School    |
| 179 | Sarah Jean Potts          | CTE - Graphic Arts Teacher     | Siegel High School    |
| 180 | Kristyn Elizabeth Reed    | SpED CDC Teacher               | Siegel High School    |
| 181 | Adam Wayne Renshaw        | US Government Teacher          | Siegel High School    |

|     |                          |                               |                            |
|-----|--------------------------|-------------------------------|----------------------------|
| 182 | Eric Frank Smith         | RISE                          | Siegel High School         |
| 183 | Lisa Lynn Snetsinger     | CTE - Health Science          | Siegel High School         |
| 184 | Casey Jonathon Adams     | Graduation Coach              | Smyrna High School         |
| 185 | Sydney Lareigh Austell   | English Teacher               | Smyrna High School         |
| 186 | Christy Lynn Burns       | CTE - Interior Design Teacher | Smyrna High School         |
| 187 | Kyle Brook Dietz         | CTE - Audio/Visual Teacher    | Smyrna High School         |
| 188 | Tracy Stepp Burtnett     | SpED Teacher                  | Smyrna High School         |
| 189 | Bryan Kevin Pitts        | CTE - Construction            | Smyrna High School         |
| 190 | Tammy Lynn Shrivalle     | US History Teacher            | Smyrna High School         |
| 191 | Julie C Verdoni          | Chemistry Teacher             | Smyrna High School         |
| 192 | Rebecca Raquel Walther   | Art Teacher                   | Smyrna High School         |
| 193 | Caitlin Elizabeth Wester | SpED Inclusion Teacher        | Smyrna High School         |
| 194 | Richard Aaron Beard      | CTE - Computer Repair Teacher | Stewarts Creek High School |
| 195 | Scott Anthony Boudreau   | History Teacher               | Stewarts Creek High School |
| 196 | Lindsey Ann Duggin       | Theater Arts Teacher          | Stewarts Creek High School |
| 197 | Susan Marie Kelly        | Music/Choir Teacher           | Stewarts Creek High School |
| 198 | Michael Alan Strickland  | ACT Prep Teacher              | Stewarts Creek High School |
| 198 | Adrianna Chelsea West    | Spanish Teacher               | Stewarts Creek High School |
| 200 | Tiffany Porter Holley    | SpED Teacher                  | Smyrna West Alternative    |

**Central Office:**

|     | <b>Name</b>              | <b>Position</b>              | <b>School/Location</b> |
|-----|--------------------------|------------------------------|------------------------|
| 201 | Hafsa Jamal Abed         | School Social Worker         | CO - Special Ed. Dept. |
| 202 | Brittany Joy Auerbach    | School Psychologist          | CO - Special Ed. Dept. |
| 203 | Joshua J. Coutts         | School Psychologist          | CO - Special Ed. Dept. |
| 204 | Larry James Crismon, Jr. | Behavior Interventionist     | CO - Special Ed. Dept. |
| 205 | Elizabeth Jane Davis     | Extended Learning Specialist | CO - Instruction Dept. |
| 206 | Megan Encalada           | Special Ed. Vision Teacher   | CO - Special Ed. Dept. |
| 207 | Niketa Nicole Little     | Sign Language Interpreter    | CO - Special Ed. Dept. |

|     |                            |                               |                        |
|-----|----------------------------|-------------------------------|------------------------|
| 208 | Corey A. Mullins           | Title I ESL District Coach    | CO - ESL Dept.         |
| 209 | Shelby Lynn Silva          | Speech-Language Pathologist   | CO - Special Ed. Dept. |
| 210 | Devolla Spann-Moorman      | Special Ed. Supervisor        | CO - Special Ed. Dept. |
| 211 | Meagan Marie Hayes Turnbow | ESL Coordinator               | CO - ESL Dept.         |
| 212 | Casey Wood                 | ESL Instructional Facilitator | CO - ESL Dept.         |

\*Reinstating tenure

**Motion made by Caleb Tidwell and seconded by Tammy Sharp to approve the recommendation of the Director of Schools to award tenure to the teachers who met the criteria for 2025-2026 as presented.**

**Vote: All yes  
Motion passes.**

## **11. LEGAL (TAB 4)**

### **I. Transfer Student Under Discipline (1)**

The Board has been requested to admit a transfer student from another school system under discipline. The student was expelled for making a mass threat.

According to Policy 6.318, the Board may deny admissions of any student (except those in state custody) when a student transfers from another school system while under suspension or expulsion.

Director of Schools' Recommendation: Deny admission.

**Motion made by Tammy Sharp and seconded by Butch Vaughn to deny the admission of this Transfer Student Under Discipline as presented.**

**Vote: All yes  
Motion passes.**

### **II. Transfer Student Under Discipline (2)**

The Board has been requested to admit a transfer student from another school system under discipline. The student was remanded for possession of a box cutter and making threats.

According to Policy 6.318, the Board may deny admissions of any student (except those in state custody) when a student transfers from another school system while under suspension or expulsion.

Director of Schools' Recommendation: Deny admission.

**Motion made by Katie Darby and seconded by Tammy Sharp to deny the admission of this Transfer Student Under Discipline as presented.**

**Vote: All yes  
Motion passes.**

## **12. ENGINEERING AND CONSTRUCTION (TAB 5)**

A. CLQ Land Development Sewer Easement for Lee Road: CLQ Land development has been working with the Town of Smyrna Utilities for sewer connection for their development on Lee Road. This development is across Lee Road from the RCS property under contract. They are requesting a 30' easement on the East boundary. CLQ has been informed that the property has not closed, but this could be approved pending closure. Engineering and Construction has reviewed the request and has no objections.

**Motion made by Butch Vaughn and seconded Caleb Tidwell by to approve the CLQ sewer easement as presented.**

**Vote: All yes  
Motion passes.**

B. Transportation Route Flow Chart: The Transportation Department has modified the route award flow chart to include all open routes offered to speed up the process.

**The Flow Chart was presented and discussed at the Work Session.**

## **13. FINANCIAL UPDATE**

-Thank you to Tory Atwood and her Attendance team for working through the transition from EIS to a new software platform with the state. They went through our system making sure to check and make corrections to our coding.

-Principal budget requests due at the end of next week pending inclement weather.

## **14. DIRECTOR'S UPDATE**

-James Evans, Chief Communications Officer, summarized the parent and employee survey results and this month's achievements and district highlights at the Work Session.

-Dr. Sullivan is attending Plan Rutherford tonight as a representative of the Steering Committee and as the Director of Schools.

-Dr. Sullivan and Mr. Runion are presenting in February to the State Board of Education on their budget process.

-Brief overview of winter weather decisions.

**15. LEGISLATIVE UPDATE**

-The legislative session has just gone back in session, so we will have an update soon on potential bills affecting education. Dr. Sullivan is part of the TOSS Legislative Superintendent’s, who meet every Friday to discuss upcoming education legislation.

-Mr. Vaught is attending the TSBA Legislative and Legal conference in February.

**16. GENERAL DISCUSSION**

-Mrs. Rosales mentioned BizTown and all board members are invited to attend Feb. 12 in Nashville.

-Dr. Sullivan reminded everyone that The Amazing Shake also takes place on Feb. 12.

-Mr. Tidwell and Mrs. Darby discussed with the Board during the Work Session their desire to change the Director’s contract to allow 6 months of severance pay in the event of termination.

-At the Work Session, Mr. Vaughn said that he is the one who brought the extension of the Director’s contract before the Board, based on our district having the highest scores in the state of Tennessee and we need to ensure that we keep Dr. Sullivan.

-Mrs. Rosales thanked the Board for passing the resolution. She also submitted a policy suggestion to Legal for the next policy meeting.

-Ms. Sharp shared that Mr. Richard Reed, Principal of LaVergne Middle School spoke on MLK Day at LaVergne City Hall.

**17. ADJOURNMENT**

Gaveled out at 6:33 pm

Approval of Agenda Minutes

\_\_\_\_\_  
Claire Maxwell, RCS BOE Chairman

\_\_\_\_\_  
Date

\_\_\_\_\_  
Dr. James Sullivan, RCS Director of Schools

\_\_\_\_\_  
Date

*Rutherford County School Board Meetings and exact conversations are recorded and may be found at the following link: <https://www.youtube.com/playlist?list=PL7CB325821E536E8D>. Board Meeting minutes are provided as a supplement to the recording.*

## 2026-2027 Signing Bonus Incentive for Hard to Staff Subject Area

Hiring Incentive for grades 6-12 math, English, chemistry, physics, world languages and special education (including social workers, school psychologists, speech language pathologists, BCBA with board certification)

Criteria:

1. A one-time signing bonus of \$4,000; paid \$2,000 in the fall and \$2,000 in the spring
2. Teacher must hold a valid TN teaching license with appropriate endorsement in that subject area
3. Teacher must be new to Rutherford County Schools, if returning to RCS or an existing employee must not have taught in any of these hard to staff areas as designated in this plan
4. Signing bonus is contingent on final employment approval.

Qualifying Endorsement Codes:

Math: 013, 122, 125, 413, 2002

Physics: 017, 129, 214, 414, 417

Chemistry: 016, 127, 212, 416

English: 001, 007, 101, 121, 159, 400, 401, 402, 407, 959

Special Education: 063, 064, 065, 066, 067, 068, 069, 089, 105, 108, 144, 145, 190, 191, 193, 194, 195, 196, 197, 198, 199, 200, 458, 459, 460, 461, 462, 463, 464, 465, 466, 468, 469, 489, 498 and other equivalent special education endorsements.

World Languages: 163, 169, 170, 404, 409, 495, 496 and other equivalent world language endorsements.

Student Teachers:

A one-time signing bonus of \$1,500; paid \$750 in the fall and \$750 in the spring will be awarded to those who have completed their student teaching in the district during the recent school year and contracted with RCS for the upcoming school year.

Retirees:

A one-time signing bonus of \$5,000; paid \$2,500 in the fall and \$2,500 in the spring for returning retirees teaching in a hard to staff certified area (see qualifying endorsements above).

## MEMORANDUM

DATE: January 22, 2026  
TO: Dr. James Sullivan, Director of Schools  
FROM: Monika B. Ridley, General Counsel  
RE: Transfer Student Under Discipline (1)

---

The Board has been requested to admit a transfer student from another school system under discipline. The student was expelled for possession of drugs.

According to Policy 6.318, the Board may deny admissions of any student (except those in state custody) when a student transfers from another school system while under suspension or expulsion.

Director of Schools' Recommendation: Deny admission.

## MEMORANDUM

DATE: January 29, 2026  
TO: Dr. James Sullivan, Director of Schools  
FROM: Monika B. Ridley, General Counsel  
RE: Transfer Student Under Discipline (2)

---

The Board has been requested to admit a transfer student from another school system under discipline. The student was expelled for possession of weapon and possession of dangerous object.

According to Policy 6.318, the Board may deny admissions of any student (except those in state custody) when a student transfers from another school system while under suspension or expulsion.

Director of Schools' Recommendation: Deny admission.

## **CONTRACTUAL AGREEMENT SCHOOL SCOREBOARDS & SIGNS**

This agreement dated the \_\_\_\_ day of \_\_\_\_\_, 2025 is to serve as a legal and binding agreement by and between the parties herein, for the purpose of defining the promises and warranties of and by Riverdale Baseball Booster Club and Riverdale High School, hereinafter referred to as "benefactors" to Wilson Bank & Trust, referred to herein as "sponsor".

Wilson Bank & Trust does hereby agree to provide a total donation to the Riverdale Baseball Booster Club for the benefit of Riverdale High School in the amount of \$50,000.00. These funds will be paid over a 5 (five) year period.

12/5/2025 = \$10,000.00

1/3/2026 = \$10,000.00

1/3/2027 = \$10,000.00

1/3/2028 = \$10,000.00

1/3/2029 = \$10,000.00

For said donation, "benefactors" do hereby agree to use the funds to go towards the purchase and have installed One (1) Model AF Plus P10 Video Board with Serial # LP-20251104-001 and Controller with Serial # CMS130-2461785, as evidenced by Invoice # 000004 dated 11/4/25 from LP Creative.

The benefactors agree to provide for the maintenance and upkeep of the video board in its current working conditions throughout the term of this agreement. If at any time the video board needs replacing, the benefactor will agree to allow the sponsor to keep their signage on the new video board for the remaining term of the agreement or have the first right of refusal to replace the video board for an extension of the of the contract.

Additionally, Wilson Bank & Trust will be allowed to place additional signage around the sports complex as negotiated between Riverdale High School and Wilson Bank and Trust.

As part of this agreement, Riverdale High School and Riverdale Baseball Booster Club agree to maintain their entire deposit relationship with Wilson Bank & Trust for a period of **five years** from the date of this contract.

The Signs will remain in place for **five years** and Wilson Bank & Trust will be the only banking advertiser on the video board.

This binding agreement will be in place, once signed, through the completion of the 2030 school year.

**Benefactor: Riverdale Baseball Booster Club**

**Sponsor: Wilson Bank and Trust**

\_\_\_\_\_  
**Riverdale Baseball Booster Club**  
**Bo Jones / President**

\_\_\_\_\_  
**Scott D. Jasper / EVP, Chief Administration Officer**

\_\_\_\_\_  
**Riverdale High School**  
**Tamera Blair / Principal**

\_\_\_\_\_  
**Date**

## Rutherford County Schools

### Application for Campus Construction Project

1. Eagleville School
2. Tim Pedigo
3. New Fence
4. Assistant Principal, Jason Brown, will be overseeing the project
5. This project supports athletics
6. Yes
7. Eagleville High School Baseball
8. \$16,000-\$17,000 – See attached quotes
9. Funding Source – donations, fundraisers, High School Baseball Account
10. No
11. No
12. Site Layout – see attached
13. Yes
14. Not available
15. Not available
16. Not available
17. If approved, December to February
18. No cost to the Board
19. Hooper Fence

## Sands Fence Company

7988 Buford Station Rd  
Lynnville, TN  
38472  
sandsfenceservices@live.com

TO

## Eagleville High School / Greg Fox

500 Old Hwy 99  
Eagleville, TN  
37060  
931-205-7458  
gfox7458@gmail.com

| DESCRIPTION   | AMOUNT             |
|---|--------------------|
| 548' of 6' Black Chain Link<br>Commercial Grade Fence | \$35.00<br>x 548   |
| 9 ga wire   | <u>\$19,180.00</u> |
| 3" terminals  |                    |
| 2" line posts   |                    |
| 1 3/8" top and bottom rails                           |                    |
| 2 - 24' Double Drive gates                            |                    |
| 1 - 6' Single gate                                    |                    |
| 548' of Clean Out                                     | \$3.00             |
| Remove and haul off existing fence                    | x 548              |
|   | <u>\$1,644.00</u>  |

# Hooper Fence Company, Inc.

Hooper Fence Company, Inc.  
 1503 West College Street  
 Murfreesboro, TN 37129

## Estimate

| Date       | Estimate # |
|------------|------------|
| 10/21/2025 | 2113       |

hooperfence@aol.com

Eagleville High School

| P.O. No. | Rep | Phone Number |
|----------|-----|--------------|
|          |     |              |

| Description   | Qty | Cost         | Total       |
|---|-----|--------------|-------------|
| Install 555 feet of 6' tall black commercial chain link fence. This price is for Class 2B commercial wire that is a must for ball fields. Includes tow 12' double gates and two 4' walk gates | 1   | 15,473.00    | 15,473.00   |
| Removal and disposal of old fence   | 1   | 1,650.00     | 1,650.00    |
| Sales Tax   |     | 9.75%        | 0.00        |
|   |     | <b>Total</b> | \$17,123.00 |

No Warranty on wood fences. Not Responsible for surveys or property lines. Not responsible for anything underground not marked by TN 811. By signing this you agree to pay all costs of collection plus reasonable attorney fees. Finance Charge of 1.5% per month will be added to unpaid balances. Jackhammer for rock is \$75 per hour. Deposit is 50% of Job total

Customer Signature \_\_\_\_\_  
 E-mail  
 Hooperfence@aol.com

**6' BLACK FUSE AND BONDED CHAINLINK FENCE**

TEAR DOWN AND REMOVE 558' OF EXISTING CHAINLINK FENCE. SUPPLY AND INSTALL 558' OF 6' TALL BLACK FISE AND BONDED CHAINLINK FENCE INCLUDING (2) 12' WIDE DOUBLE GATES AND (2) 4' WIDE SINGLE GATES

NO ROCK FEES!!!

| QTY. | UNIT PRICE  | TOTAL       |
|------|-------------|-------------|
| 1    | \$26,222.78 | \$26,222.78 |

Subtotal \$26,222.78

NO TAX SERVICE (0.0%) \$0.00

Total \$26,222.78

Wesley Peach  
Premier Fence,LLC  
Project Manager  
G.C. Lic.#71240  
615-987-1219

Approve

Request Changes

clienthub.getjobber.com



Rutherford County Schools

Application for Campus Construction Project

Before any request for construction of proposed buildings will be forwarded to the Rutherford County School Board, the following form must be filled out in full and submitted to the Rutherford County Schools Engineering and Construction Department with a letter from the School Principal, a site plan, floor plan and elevations (if applicable), a full estimate, and schedule.

1. School Name:

**Smyrna High School**

2. Principal:

**Dr. Sherri Southerland**

3. Project Name:

**JROTC Obstacle Course**

4. Assistant Principal who is overseeing the project:

**Mr. Billy Harris**

5. Does project support recreational sports, athletics or education?

**Yes, the project supports JROTC**

6. Does this project meet all gender equity criteria?

**Yes**

7. What department is this project being constructed for? (I.E. Baseball, softball, band, FFA, etc.)

**CTE**

8. What is the anticipated cost for this project (this should include all utility connection fees, building permits, inspection, and construction). Attach and submit a detailed estimate.

Utility Connection Fees: N/A

Building Permits: N/A

Inspections: N/A

9. What is the funding source and are funds currently available: (Grant, Booster Club, etc.) List all sources.

**Home Depot: Supplies and Equipment**

**Middle Tennessee Electric:**

10. If a grant or funded by a foundation/donor/ charitable organization, what is the foundations name?

**Home Depot: \$1,327.70**

**TWFrierson: \$2,500**

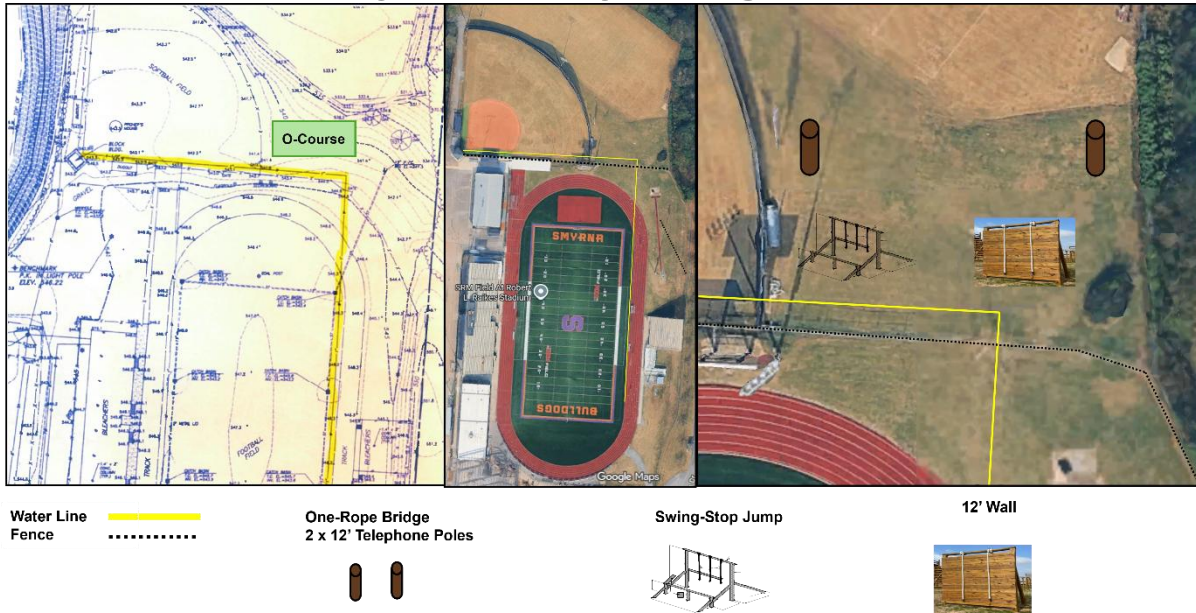
11. Do construction plans meet criteria for funding? Yes

| <b>Itemized Cost List for Obstacle Equipment</b> |                 |                  |                        |
|--|-----------------|------------------|------------------------|
| <b>Equipment Type</b>                            | <b>Quantity</b> | <b>Cost/Item</b> | <b>Total Item Cost</b> |
| 2"x2"x6" Pressured Treated Lumbar                | 20              | \$8.68           | \$173.60               |
| 4"x4"x12" Pressure Treated Lumbar                | 8               | \$17.88          | \$143.04               |
| 1"x1/2"x50' Rope                                 | 4               | \$103.15         | \$412.60               |
| 3/4"x1'1/4" Long Drift Pins                      | 20              | \$29.99          | \$599.80               |
| Purple Outdoor Paint                             | 3 gallons       | \$40.98          | \$122.94               |
| Smyrna Outdoor Gold Paint                        | 2 gallons       | \$40.98          | \$81.96                |
| Outdoor Wood Stain and Sealer                    | 5 gallons       | \$189.00         | \$189.00               |
| Telephone Poles                                  | 7               | \$0              | \$0                    |
|  |                 |                  | \$1,722.94             |

11. If funded by a local financial institution, has the loan been approved and who is the guarantor for loan: N/A

12. Do you have a site layout showing where this project will be constructed on campus? **Yes**

## Proposed Layout for Smyrna High School JROTC



**See Attachments for full view**

13. Has RCS Engineering & Construction reviewed project location? Are there any conflicts in utilities or easements?

**Yes. A east-west running water line, highlighted in yellow in the photo, lies between the fenceline and the proposed Obstacle Course site.**

14. Has MT EMC, CUD, MWSD or other local utilities been contacted for service connection if required?

**No Service Connection is required.**

15. Are plans drawn and stamped by Architect/ Engineer?

**N/A**

16. Have plans been submitted to Rutherford County Codes or Murfreesboro City Building Codes Offices for review and/or approval. (LaVergne City Codes, Smyrna City Codes, Murfreesboro City Codes)

**N/A**

17. What is your timeline for completion of project? When will it start and when will it be completed?

**January 21, 2026-March 31, 2026**

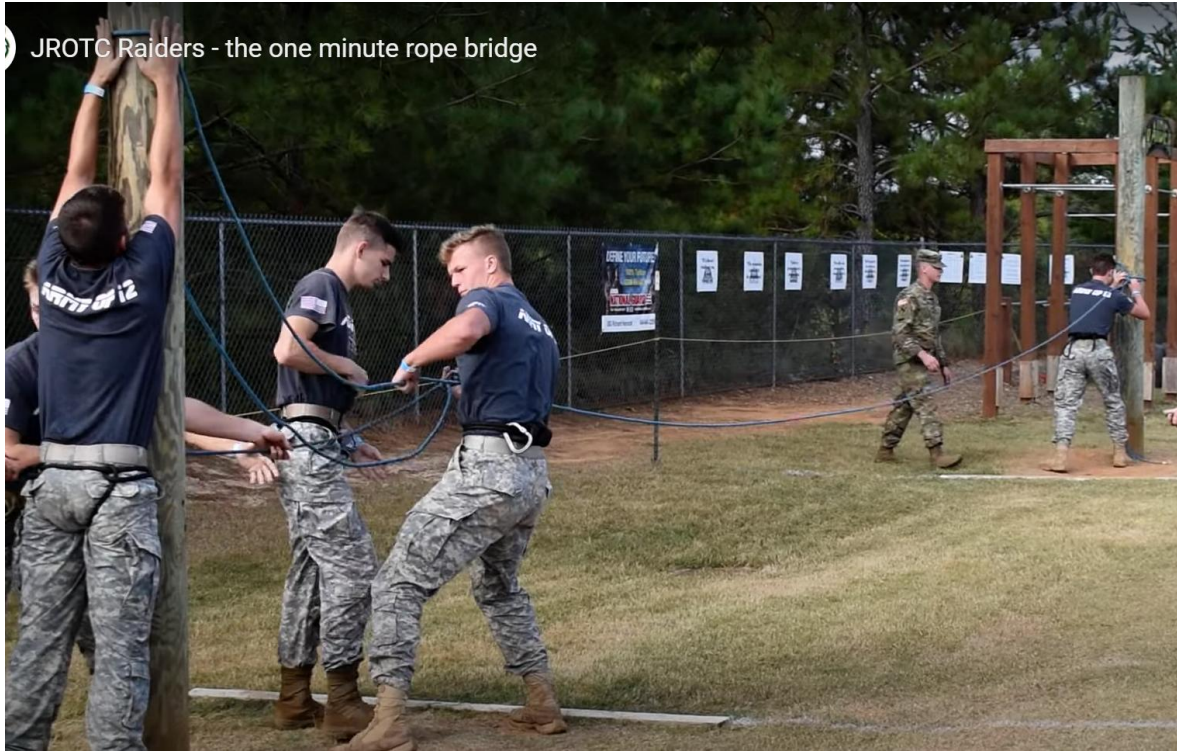
18. If stated that construction project is at no cost to school Board all cost should be included in project. This includes electrical, plumbing, and mechanical services.

**NO COST TO SCHOOL BOARD**

19. Do you have a contractor for constructing/completing the project? What is the name of Contractor? If no, who will be overseeing the project from the community and who will be doing the work?

**Yes,  
TWFrierson,  
Home Depot  
JROTC program**

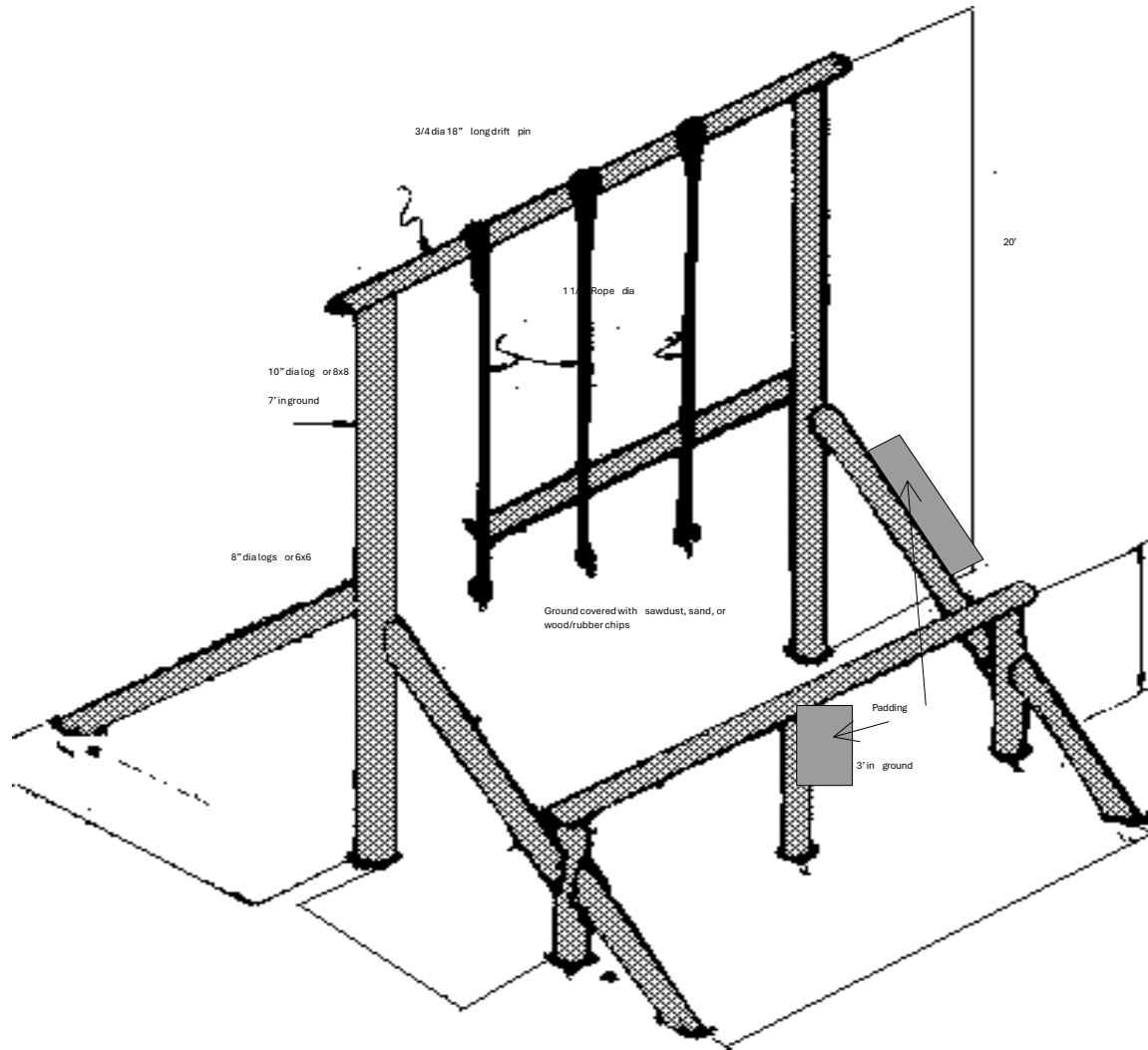
## “One-Rope Bridge”



## “12-Foot Wall”



# “Swing, Stop, & Jump”





# Whitworth-Buchanan Middle School

5555 Manchester Pike • Murfreesboro, TN 37217

Phone: 615-904-6765 Fax: 615-904-6766

**Principal:** Chris Butner

**Assistant Principals:** Rebecca Cousin • Kayla Crutcher • Laura Davis

To whom it may concern:

Attached is an application for Whitworth-Buchanan Middle School, submitted on behalf of our baseball program, proposing the transfer of a scoreboard from Siegel High School to Whitworth-Buchanan Middle School.

This would be a direct exchange of our current scoreboard for the new unit. We anticipate that the existing support structure may need to be replaced, with an estimated material cost of approximately \$3,000. Funds for this project are already available in the baseball account, ensuring that the upgrade will require no financial contribution from the school or the school board.

The necessary electrical connections are already in place, and the scoreboard will continue to operate in compliance with city code by shutting off after each game, as is the practice with our current equipment.

Thank you for your time and consideration.

Sincerely,

Chris Butner  
Principal

**Home of the Yellow Jackets**

[www.wbm.rcschools.net](http://www.wbm.rcschools.net)



# Whitworth-Buchanan Middle School

5555 Manchester Pike • Murfreesboro, TN 37217  
 Phone: 615-904-6765 Fax: 615-904-6766

Principal: April Sneed  
 Assistant Principals: Chris Butner • Rebecca Cousin • Laura Davis

|   |                                  |
|---|----------------------------------|
| School Name   | Whitworth-Buchanan Middle School |
| Principal   | April Sneed                      |
| Project Name  | Scoreboard Transfer              |
| Assistant Principal who is overseeing the project   |                                  |
| Does project support recreational sports, athletics or education?   | Athletics                        |
| Does this project meet all gender equity criteria?  | Yes                              |
| What department is this project being constructed for? (I.E. Baseball, softball, band, FFA, etc.)   | Baseball                         |
| What is the anticipated cost for this project (this should include all utility connection fees, building permits, inspection, and construction). Attach and submit a detailed estimate. | NTE \$ 3,000                     |
| What is the funding source and are funds currently available: (Grant, Booster Club, etc.) List all sources.   | Baseball Acct.                   |
| If a grant or funded by a foundation/donor/ charitable organization, what is the foundations name?  | US Elite Baseball                |
| Do construction plans meet criteria for funding?  | Yes                              |
| If funded by a local financial institution, has the loan been approved and who is the guarantor for loan  | N/A                              |
| Do you have a site layout showing where this project will be constructed on campus?   | Sec Attached                     |
| Has RCS Engineering & Construction reviewed project location? Are there any conflicts in utilities or easements?  | NO Conflicts                     |
| Has MTEMC, CUD, MWSD or other local utilities been contacted for service connection if required?  | Already there.                   |
| Are plans drawn and stamped by Architect/ Engineer?   | N/A                              |

Home of the Yellow Jackets

www.wbm.rcschools.net



# Whitworth-Buchanan Middle School

5555 Manchester Pike • Murfreesboro, TN 37217  
Phone: 615-904-6765 Fax: 615-904-6766

Principal: April Sneed

Assistant Principals: Chris Butner • Rebecca Cousin • Laura Davis

|  |                                   |
|--|-----------------------------------|
| Have plans been submitted to Rutherford County Codes or Murfreesboro City Building Codes Offices for review and/or approval. (LaVergne City Codes, Smyrna City Codes, Murfreesboro City Codes) | N/A this<br>will be a direct SWAP |
| What is your timeline for completion of project? When will it start and when will it be completed?   | By March 2026                     |
| If stated that construction project is at no cost to school Board all cost should be included in project. This includes electrical, plumbing, and mechanical services.                         | ~                                 |
| Do you have a contractor for constructing/completing the project? What is the name of Contractor? If no, who will be overseeing the project from the community and who will be doing the work? | Jeff Hamblen                      |

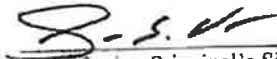
Home of the Yellow Jackets

[www.wbm.rcschools.net](http://www.wbm.rcschools.net)



Rutherford County Government  
**Inventory Control**  
**School Transfer Form**

| Asset # | Category and Description                        | Make/Model | Serial Number |
|---------|---|------------|---------------|
| N/A     | Fair-Play 26' Baseball Scoreboard + Pitch Count | BA-7126-2  | N/A           |
|         |   |            |               |
|         |   |            |               |
|         |   |            |               |
|         |   |            |               |
|         |   |            |               |
|         |   |            |               |

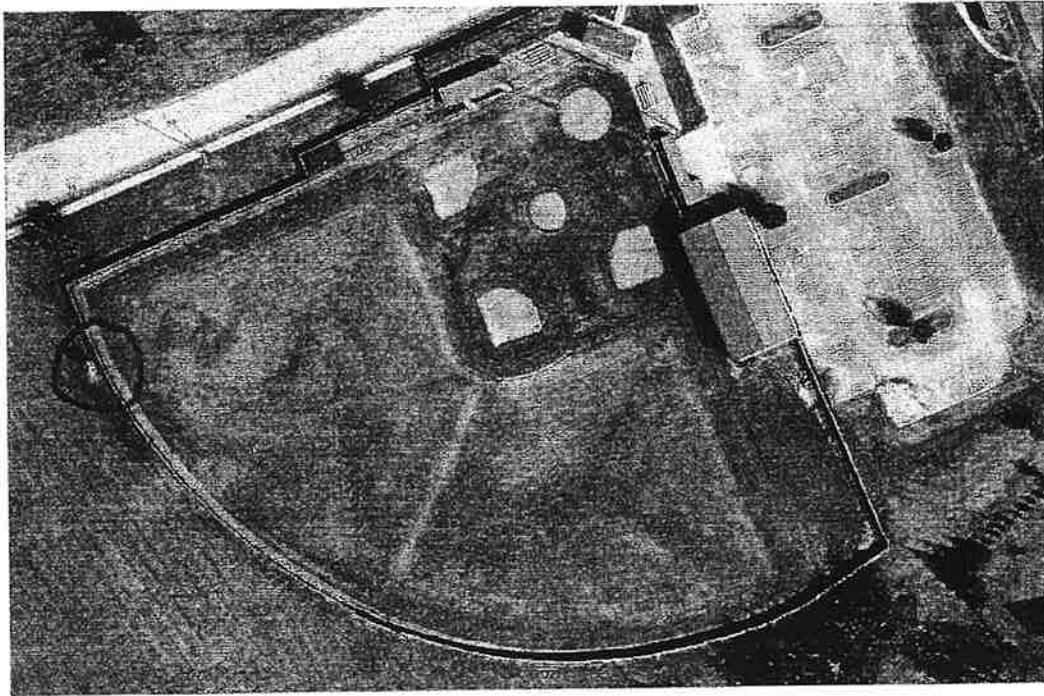
  
Transferring Principal's Signature

Siegel High School  
School

  
Receiving Principal's Signature

Whitworth-Buchanan Middle  
School

*By signing above you certify that the asset(s) listed above will be transferred and included as part of the receiving party's inventory. Please submit this form to the Inventory Control Office once both parties have agreed and signed. You may fax this form to our office at (615) 904-7526. If you have any questions please call us at 890-7207.*



Whitworth Buchanan Baseball would like to accept the donated scoreboard from Siegel High School to replace our older scoreboard at the Baseball Field. This would be a straight swap from ours to the new one. However; we may have to replace the current support for the scoreboard. Jeff Hamblen who does the county scoreboard work, estimated a cost of \$3,000 if we were to need to replace these.

We have several parents who own construction companies, or similar so there would be no cost of moving it from Siegel High to WBMS, and the electrical connection is already in place for what we need.

This scoreboard will be shut off each game so it will still comply with city codes as we have used with the current scoreboard.





Proud Representative of **Burke**

Carnes Recreation, LLC  
923 Oldham Dr, PO Box 744  
Nolensville, TN 37135

Quote Number: 2629-1  
Created Date: 1/20/2026  
Expiration Date: 2/19/2026

**Payment Terms**

1st Deposit Amount: \$ 3,378.54  
1st Deposit Due Date: Due at the time of order  
  
2nd Deposit Amount: \$ 3,378.54  
2nd Deposit Due Date: Due 2 Weeks prior to equipment ship date

To place an order, please review the Terms of Sale below and sign and return this quote.  
If applicable, include a copy of your tax exempt certificate to avoid state/local sales taxes.

**Terms of Sale**

Acceptance by either a signature or a purchase order based on this quotation indicates that you are in full agreement with all terms and conditions of this quotation including the following:

If a mutually agreed upon contract has been signed, those terms and conditions will supersede these terms and conditions.

Prices are stated in USD and are valid for 30 days. After 30 days, prices are subject to change without notice. Sales tax will be charged unless a copy of a valid Sales Tax Exemption Certificate is presented with order.

Quoted lead times are based on normal production levels. Actual lead times may vary due to quantities ordered, seasonality and higher than normal production levels. Customer will receive an order acknowledgement which will state the anticipated ship date.

Specify all color selections in writing. Any discrepancies that arise due to oral color selections will be the responsibility of the customer. Custom colors, where available, would be an additional charge.

If customer is installing equipment, all equipment is to be installed per manufacturer's instructions and appropriate guidelines such as ASTM and CPSC.

Loss or Damage in Transit: A signed bill of lading is our receipt from a carrier that our shipment to you was complete and in good condition upon arrival. Before you sign, please check the Bill of Lading carefully when the shipment arrives to make sure nothing is missing and there are no damages. Freight terms are FOB Fond du Lac, WI and charges are predicated on all items being ordered and shipped at the same time. Therefore, once the shipment leaves our plant, we are no longer responsible for any damage, loss or shortage.

Installation, site work, building permits, engineered drawings, etc. are not included unless noted in quotation.

Installation Terms:

**A. Carnes Recreation Responsibilities (Applicable if Quoted)**

- Standard Services Include:
  - Shipping notification/receiving instructions.
  - Installation of equipment and materials.
  - Trash clean up (Not including cost of dumpsters and off-site trash disposal unless noted).
- All Burke structure shipments include a FREE maintenance kit (Includes installation booklet, graffiti remover, tools and touch up paint).



Proud Representative of **Burke**

Carnes Recreation, LLC  
923 Oldham Dr, PO Box 744  
Nolensville, TN 37135

Quote Number: 2629-1  
Created Date: 1/20/2026  
Expiration Date: 2/19/2026

**Terms of Sale Continued**

**B. Optional Responsibilities (Must be clearly outlines in the applicable Carnes Recreation quotation/contract):**

- Removal of existing equipment.
- Underground utility check.
- Accept delivery and unload equipment.
- Site preparations and grading, drainage systems, etc.
- Engineered drawings for purchased equipment.
- Other permits or engineered drawings (i.e. zoning permits, environmental permits, site surveys, etc.).
- Provision of temporary fencing.

\*\*All other responsibilities must be clearly outlined in the applicable quotation/contract\*\*

**Building Permits:**

Building permits are the responsibility of the owner. If a building permit is required for your project, there will be an administrative, expeditor, and application fee included on project quote. This fee does not include the cost of the actual permit. Customer will be charged "actual permit" cost on final invoice.

NOTE - All zoning, planning, environmental, etc. permits and approvals are the responsibility of others.

**Other Notes:**

Access/Utilities. Access must be provided to the installation area for heavy trucks and equipment. Access of equipment and personnel is the obligation of the customer to provide until the project is fully completed. We will take every precaution to avoid damage, however any damage caused by the normal installation of our product, such as sod, concrete sidewalks, private underground utilities, etc., will be the responsibility of the customer, as will any additional costs associated with limiting damage such as providing plywood over sod for access. If access is not reasonably close to the jobise, any additional costs incurred due to having to transport materials and/or supplies will be the responsibility of the customer.

Rock/Foreign Object Clause. Most installations require digging of holes and footing equipment in concrete below finished grade. Removal of existing ground covers such as asphalt, concrete, tan bark, sand, pea gravel, wood fiber, rubber matting, poured-in-place rubber surfacing, or underground obstructions such as rock, coral, asphalt, concrete, pipes, drainage systems, root systems, water, or any other unknown obstructions are discovered, charges will be added to the original proposal.

Playground Surfacing. All playground equipment is to be installed in conjunction with safety surfacing per CPSC guidelines and ASTM standards. If the customer contracts for something contrary to the guidelines, they are accepting all responsibility for any liability and future litigation that may arise.

**Acceptance**

**Accepted & Approved**

The undersigned hereby agrees to the charges isted in this quotation and to the attached terms and conditions. An order will be placed in accordance to this quotation unless otherwise noted.

Signed: \_\_\_\_\_  
Print Full Name & Title: \_\_\_\_\_

Dated: \_\_\_\_\_

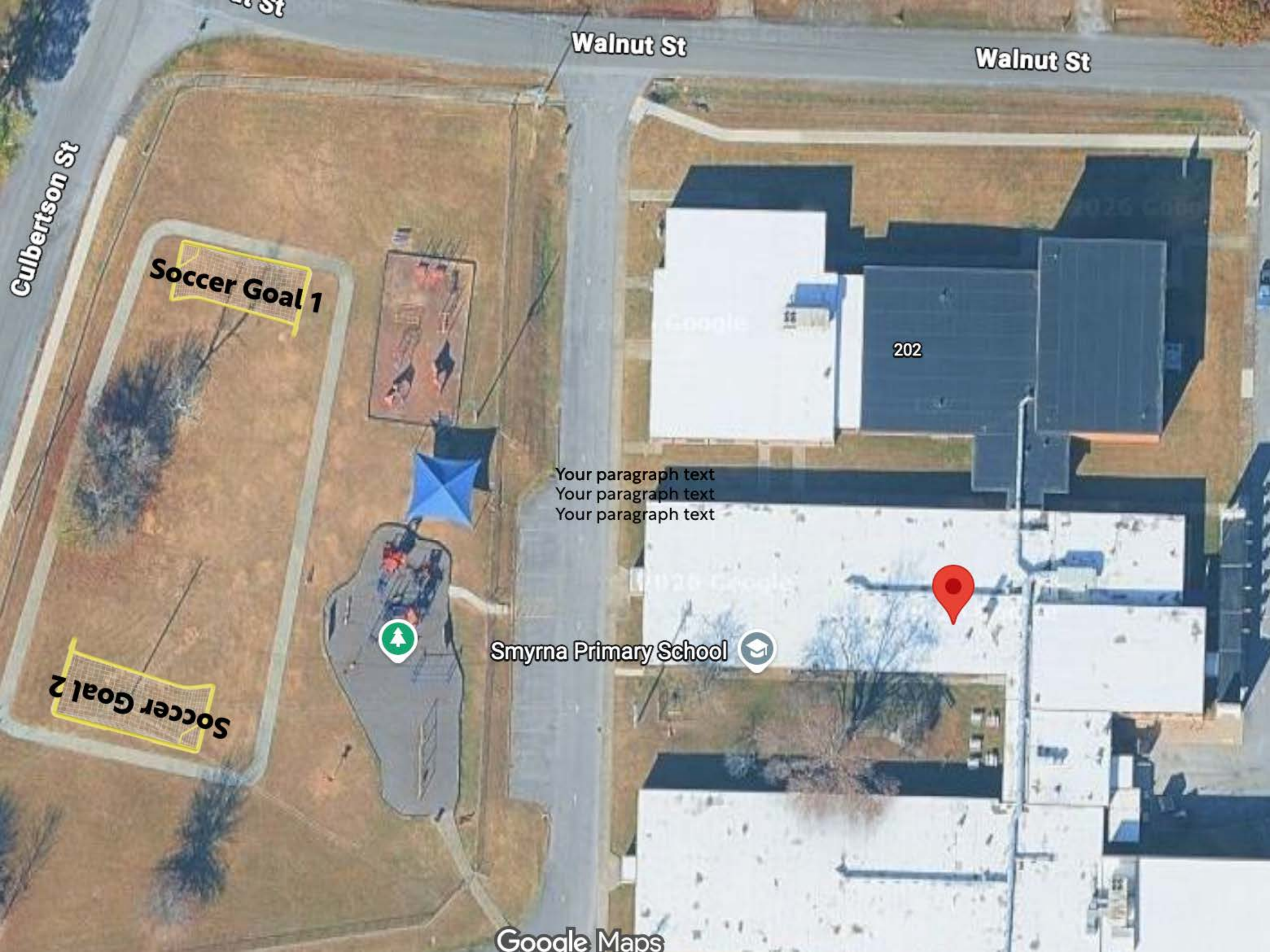
## Rutherford County Schools

### Application for Campus Construction Project

Before any request for construction of proposed buildings will be forwarded to the Rutherford County School Board, the following form must be filled out in full and submitted to the Rutherford County Schools Engineering and Construction Department with a letter from the School Principal, a site plan, floor plan and elevations (if applicable), a full estimate, and schedule.

1. School Name **Smyrna Primary School**
2. Principal **Amy Perry**
3. Project Name **SPS Soccer Goals**
4. Assistant Principal who is overseeing the project **Mark Gibson (Principal overseeing project)**
5. Does project support recreational sports, athletics or education? **Yes, recreation and athletics.**
6. Does this project meet all gender equity criteria? **Yes.**
7. What department is this project being constructed for? (I.E. Baseball, softball, band, FFA, etc.) **SPS Playground**
8. What is the anticipated cost for this project (this should include all utility connection fees, **6,757.08** building permits, inspection, and construction). Attach and submit a detailed estimate.
9. What is the funding source and are funds currently available: (Grant, Booster Club, etc.)List all sources. **Fundraiser: Boosterthon Fun Run**
10. If a grant or funded by a foundation/donor/ charitable organization, what is the foundations name? **NA**  
Do construction plans meet criteria for funding?
11. If funded by a local financial institution, has the loan been approved and who is the guarantor for loan **NA**
12. Do you have a site layout showing where this project will be constructed on campus? **Within walking track on playground**
13. Has RCS Engineering & Construction reviewed project location? Are there any conflicts in utilities or easements? **No conflicts: on playground.**
14. Has MTEMC, CUD, MWSD or other local utilities been contacted for service connection if required? **Playground equipment is being installed in same area by same contractor. This is being added as an additon to the playground update.**
15. Are plans drawn and stamped by Architect/ Engineer? **NA**

16. Have plans been submitted to Rutherford County Codes or Murfreesboro City Building Codes Offices for review and/or approval. (LaVergne City Codes, Smyrna City Codes, Murfreesboro City Codes) [NA](#)
17. What is your time line for completion of project? When will it start and when will it be completed? [Same timeline as county-purchased playground update.](#)
18. If stated that construction project is at no cost to school Board all cost should be included in project. This includes electrical, plumbing, and mechanical services. [Agreed. Quote includes all costs.](#)
19. Do you have a contractor for constructing/completing the project? What is the name of Contractor? If no, who will be overseeing the project from the community and who will be doing the work? [Burke Playgrounds.](#)



Soccer Goal 1

Soccer Goal 2

Walnut St

Walnut St

Culbertson St

Your paragraph text  
Your paragraph text  
Your paragraph text

Smyrna Primary School



Google Maps